



NEW LIFE

ANNUAL REPORT 2022/23

Australian Churches of Christ
Global Mission Partners



Tapera, father to a young family, travelled for up to 45 minutes each way to fetch water for his homestead. Between August and September it would become harder because the nearby river would dry up.

With your support, our partners Showers of Blessing, Zimbabwe, installed a borehole in his community. The safe water supply means better health for Tapera's family and allows him to water crops, providing food and a sustainable income. Safe water gives fathers like Tapera the confidence and resources they need to help look after their families.

Showers of Blessing Trust's (OSBT) project is supported by the Australian Government through the Australian NGO Cooperation Program (ANCP).

Contents

What a Year!	4
New Life:	
Address from the Executive Officer	6
Address from the Board Chair	7
Highlights and Challenges	8
Your Impact this Year	9
Our Partners Around the World	10
International Church Partnerships (ICP)	12
Sharing New Life with Others	14
Your Impact this Year	15
ICP Partners and Projects	16
ICP Associate Partners	19
Churches of Christ Overseas Aid (COCOA)	20
New Systematic and Life-giving Change	22
Your Impact this Year	23
COCOA Partners and Projects	24
Indigenous Ministries Australia (IMA)	28
Embracing New Life	30
Your Impact this Year	31
IMA Partner Highlights	32
embody	34
New, Prayerful Mission, Justice and Advocacy	36
Your Impact this Year	37
People & Programs	38
Partner Visits	40
People in Mission	41
Emergency Relief	42
Meet the Team	44
Board Members	45
Financial Report	46
Finances at a Glance	48
Breakdown by Country	49
Financial Statements	50
Independent Audit Report	52
Thank you!	54

WHAT A YEAR! YOUR IMPACT IS WORTH CELEBRATING

Every year, your impact is worth celebrating! Your generosity changes the lives of many people and makes a difference to those in need. Read on for a small selection of important highlights you've helped achieve.



Image: Centenary of Churches of Christ Celebrations, Daund Church of Christ, India

NEW LIFE

ADDRESS FROM THE EXECUTIVE OFFICER

I want to express my heartfelt thanks for the warm welcome I've received since joining Global Mission Partners (GMP) and receiving the baton of leadership from long-serving former Executive Officer, John Gilmore.

Since commencing in late January 2023, I have been delighted, getting to know the partners, supporters, church leaders, Board members and team, including volunteers. All which make up the dedicated community we know as Global Mission Partners. Each of us plays an important part in God's global mission.

I am especially impressed with the quality of our partners and those who lead them. I had the privilege of meeting a number of partners online in my first few months and also in-person, when our COCOA team hosted their Partnering Through Stronger Communities (PTSC) forum in Chiang Mai, Thailand. This experience allowed our partners to learn alongside one another, discussing important topics such as Christian community development, safeguarding and monitoring and evaluation. What was most obvious to me, however, was the conviction for positive change amongst these leaders. Each one displayed determination and communicated a passionate vision for change in their communities. We ought to be proud to partner with and support each one of them.

Equally, I'm pleased to see a strong and positive culture across the staff team at Global Mission Partners. This was highlighted to me when the earthquake struck the Republic of Türkiye and Syria in my first week - killing 50,000 people and making 1.5 million homeless. I saw how the GMP team sprang into action to make sure we raised as much support as possible for the victims there, supported by our partners through the ACT Alliance. Together we raised over \$90,000 which has assisted countless families who lost so much. Our team at GMP are resilient, loyal and mutually affirming which will serve us well going forward.

It wasn't long after the Türkiye and Syria earthquake that our partners at the Conference Of Churches of Christ in Vanuatu (CCCV) experienced their own emergency. Two cyclones (Kevin and Judy) in one week, caused extensive damage, uprooting plantations and home gardens resulting in an ongoing food shortage. Two of our COCOA staff were in-country and were held up in Port Vila while power and flights were restored. The CCCV

staff were able to adapt and respond to the needs quickly and Global Mission Partners provided emergency funding to help support the ongoing recovery work.

This increase in disasters is indicative of our times and is unfortunately on the rise. As I look to the future, I foresee a need to be ready for more situations like these, but also to serve partners in increasingly challenging circumstances. As governments apply greater pressure on Christians, as resources become more scarce, as inequality widens and as power shifts, our expression of mission will need to adapt. These are some of the factors we face in conducting mission and development in our time.

As Christians we can have confidence. We can recall endless examples in Scripture where God worked in amazing ways to overcome what we perceive to be impossible situations. While there might be challenges ahead - increasing disasters, tighter compliance requirements, rapid technological changes, financial pressures - I am comforted stepping forward knowing Christ's light continues to shine in our darkness (John 1:5).

This new season for Global Mission Partners I believe will continue to be Jesus-centred, local partner-led, collaborative, courageous and trustworthy. My hope is we will be a part of a fresh missional movement, honouring our legacy while finding new creative ways to serve our partners faithfully and fulfil our commitment to the gospel.

In Faith,



John Lamerton,
Executive Officer



ADDRESS FROM THE BOARD CHAIR

The opportunity as Chair to write a statement in this Annual Report helps me to reflect on the past year's many privileges and challenges we have faced as Global Mission Partners.

It has been a privilege to be involved in our Lord's mission for the world through Global Mission Partners in leading the Board of Directors, as we steer the organisation into the future. It has also been a privilege to reflect on stories of the past and present from those who know these stories well. These stories tell us of people and an organisation stepping out in great faith to serve the Lord internationally and nationally. This story continues today and I have confidence into the future in the same vein.

It has been a privilege to have dedicated staff, supporters and partners who are passionate about the gospel in their localities and who are willing to translate the message of Jesus into practical missional activities. In a time when the Not for Profit sector is struggling, it has been a privilege to witness God's provision through faithful people, churches and organisations. I thank you, each one of you, for your part in supporting the vision of Global Mission Partners.

It has been a privilege to be part of the process as the Board chose John Lamerton to be our new Executive Officer after John Gilmore concluded his faithful 15 years as Executive Officer. We welcome John as he leads the dedicated staff, who are part of developing a new organisational structure for the healthy future of Global Mission Partners.

With the privileges, though, have come many challenges.

We are still receiving Redress claims against us from those who have been traumatised in the past as a result of being part of our historical Indigenous childcare activities. This will continue for many years to come and is a sad part of our collective history that needs forgiveness and positive reconciliation. These actions are needed as part of our challenge as Churches of Christ in Australia in the future development of Indigenous ministry.

Ongoing financial support is always needed to be sure the ministry continues into the future. We are indebted to our supporters and praise God for each one. The challenge continues though to support those who currently support us, while developing new supporters who will bring ongoing gifts to maintain what we are doing and develop new areas of future ministry and partnerships.

Our partners are the reason Global Mission Partners exists. This means there is risk which has to be taken seriously. Global Mission Partners has had its fair share of organisational risks to consider over the year ranging from partners in war torn countries, partners being caught up in natural disasters, the ongoing impact of COVID, stretched finances along with the ongoing associated risks that come when relating to people, programs, policies and participation in future and developing activities.

This Annual Report will expand further the privileges and challenges faced and I commend it to you to foster your prayerful and practical ongoing connection with Global Mission Partners.

God Bless,



Barrie Yesberg
Board Chair





HIGHLIGHTS AND CHALLENGES

A key highlight was experiencing the privilege of seeing our partners in person with the lifting of COVID-19 travel restrictions. Global Mission Partners' (GMP) staff visited partners in Papua New Guinea, Zimbabwe, Vanuatu, Fiji, Vietnam, the Philippines and India. Many of our COCOA partners gathered in Thailand during May 2023 to learn from one another as part of the Partnering Through Stronger Communities (PTSC) forum. While online platforms were good stop gaps for keeping in touch, there was nothing like being face to face with our partners, praying together, talking through issues and sharing meals and worship. One of the pleasing aspects of these visits was to see the resilience of growth that many partners' exhibited.

A significant change for Global Mission Partners was the retirement of Executive Officer, John Gilmore, after 15 years in leadership. In November 2022 we farewelled John. He steered the organisation through significant change into an innovative and growing organisation, which saw us achieve full DFAT accreditation, begin IMA and embody, as well as adding partnerships in Indonesia, Bangladesh, Thailand, South Sudan and the Philippines. John's legacy is a GMP that is prepared to step out in faith and be imaginative in the way it partners in mission.

After nearly 19 years at Global Mission Partners, Val Zerna also retired in December 2022. The breadth of official roles that Val had was matched only by the unofficial roles she played. Val worked hard to keep us running smoothly through various crises, trials and times of celebration. Val's contribution cannot be underestimated. We are grateful for her long-service, wisdom and care for our partners.

The changes in staff, while a challenge, also provided a highlight for GMP. The first was the process by which the Global Mission Partners' Board went about searching for a new Executive Officer (EO). The Board approached a professional recruitment organisation to undertake the task of narrowing the field of candidates to find the person to be the new EO. The process was

smooth, staff were kept informed and the end result was the appointment of John Lamerton, who has an extensive background in not-for-profits.

John has been warmly embraced by staff this year as he leads Global Mission Partners through a difficult context with calmness and insight. The transition to John Lamerton has been without the complexity normally experienced by organisations going through these transitions.

Craig Brown, Deputy Executive Officer, is to be acknowledged for the way he helped manage the leadership transition. There were also a number of Board members who stepped in over that period to ensure important governance projects were not neglected, including our financial management and Redress administration.

Just prior to Easter 2023, the team gathered in Adelaide for a long-awaited Staff Retreat that was a time of refreshment and an introduction to John Lamerton. It had been four years since the staff had been able to gather together in this way.

While we farewelled some well-loved members of our team, we also gained some new talent. In particular, we welcomed Cathy Chang as Chief Finance Officer who will strengthen our finance and operations team, especially as we seek to uphold the high-standards of being a fully accredited member of DFAT's Australian NGO Cooperation Program.

The staff at Global Mission Partners have continued to work and experiment with the 'Hub' model, encouraging greater communication and collaboration across and within our Executive, Operations (formerly 'Support'), Engagement and Programs (ICP, COCOA and IMA) Teams. We are also - like many other organisations - experimenting with work patterns that respect hybrid working practices (home and office) while encouraging team building across our staff.

YOUR IMPACT THIS YEAR



This year you've helped make possible:

International Church Partnerships in **11** Countries

International Development Partnerships in **6** Countries

8 Indigenous ministry partners in Australia

356 people involved in embody campaigns

OUR PARTNERS AROUND THE WORLD



- International Church Partnerships (ICP) Projects
- Churches of Christ Overseas Aid (COCOA) Projects
- Indigenous Ministries Australia (IMA) Projects
- embody Communities




Australia
Projects: IMA, embody
Areas of work: Indigenous Ministry and embody campaigns



India
Projects: ICP, COCOA
Areas of work: Church partnership and welfare programs (ICP); livelihoods, schooling, health care (COCOA)



Philippines
Projects: ICP
Areas of work: Church and leadership development (ICP)



Vanuatu
Projects: ICP, COCOA
Areas of work: Church and leadership development (ICP); community development, disaster risk reduction (COCOA)



Bangladesh
Projects: ICP, COCOA
Areas of work: Church and leadership development (ICP); sanitation, education, livelihoods (COCOA)



Indonesia
Projects: ICP
Areas of work: Church and leadership development (ICP)



South Sudan
Projects: ICP, COCOA
Areas of work: Church and leadership development (ICP); schooling, livelihoods (COCOA)




Vietnam
Projects: ICP
Areas of work: Church and leadership development (ICP)



Fiji
Projects: ICP, COCOA
Areas of work: Church and leadership development (ICP), advocacy (COCOA)



Papua New Guinea
Projects: ICP
Areas of work: Church and leadership development (ICP)



Thailand
Projects: COCOA
Areas of work: Livelihoods (COCOA)



Zimbabwe
Projects: ICP, COCOA
Areas of work: Church and leadership development, supporting evangelists (ICP); vulnerable children, safe water (COCOA)

CONNECTING CHURCHES AROUND THE WORLD

INTERNATIONAL CHURCH PARTNERSHIPS

International Church Partnerships (ICP) focus on partnering with the global church by supporting our international church partners in their mission commitments.

We do this by connecting Australian people and churches to those across the nations so that we can support, encourage, and resource the work of the gospel in Bangladesh, Fiji, India, Indonesia, Papua New Guinea, the Philippines, South Sudan, Thailand, Vanuatu, Vietnam and Zimbabwe.



Image: Staff at The International Christian College of Manila (ICCM).



Leaders of the Melanesian Evangelical Churches of Christ, Papua New Guinea.

SHARING NEW LIFE WITH OTHERS

'New Life' is a theme that we can embrace as we learn the lessons post the worst of the pandemic. Some of us have embraced the idea that life is not always predictable, and that we need to make the most of it.

That, of course, is a position of privilege that our International Church Partnerships (ICP) churches, pastors, training institutions and faculty, evangelists, leaders and missionaries don't have. I don't write that to make us feel guilty – but as a matter of fact. It also reminds us that our privilege works positively to support our partners as they seek to spread the good news with authentic lives that those around can see Jesus in.

In Bangladesh, among strife and violence in the Chittagong Hill Tracts, there is an offer of peace as people learn about Christ.

In South Sudan, there is the offer of new life as we train emerging leaders to share the love of Jesus Christ.

In Papua New Guinea, where poverty and violence threaten lives and lifestyles, the churches we partner are speaking of and acting out what a new life in Jesus means.

In Vietnam, the local churches speak boldly in a communist setting that seeks to conform life – but the

gospel values the image of God in everyone, leading to a new view of life and community.

Your support, whether it be through prayer, finance, advocacy, or sharing stories, has enabled ICP to partner with churches and training institutions from Zimbabwe to Fiji, from India to the Philippines. This occurs in ministries as diverse as leadership training, motorcycle evangelists, theological faculty and students and church pastors.

We cannot do it without you. Your support gives the opportunity for our ICP partners to share new life with others. In a world that is still asking questions about what it means to live, your support enables our partners to have the certainty to go out and help people work through their answers.

In this new era, ICP is still focused on leadership, evangelism and church planting. The past year has been a difficult one, with travel being expensive, organisational shifts occurring and many churches here in Australia adjusting to different patterns of attendance and giving.

Despite that, new life is something we would all like to continue to support.

YOUR IMPACT THIS YEAR

MEET PASTOR SUNNY

Pastor Purnal (Sunny) Naidu was ordained in 2010 but unfortunately the church he started in Nadi was closed. He then worked as an assistant in another church setting, and eventually moved to Sigatoka where he became a baker to support his wife, Kavita, and their three children.

While in Sigatoka, they lost their house in a fire and moved to a residence just near the church in Lomowai. It was there that they met Pastor Muneshwar and started attending the Lomowai Church. He and his family continued to attend even when they moved 30 minutes away.

When Muneshwar resigned in early 2023, Sunny was approached to preach at their Sunday services. He did this so well that a potentially traumatic period for the church became a smooth transition, and he was elected with 100 percent of the vote for a new pastor.



Sunny and his family have moved back to Lomowai. "Through my experience a pastor and the church are more blessed if he lives near the church," says Sunny. His care of church members and passion for the gospel have won the hearts of the Lomowai Church during a difficult time.

This year you helped ICP projects achieve:

Church Partnerships in **11** Countries

50 Leaders trained at CCTSI in Indonesia

26 evangelists on track to graduate in South Sudan

1000 people baptised in South Sudan

or further **68** people baptised in Vanuatu

and **15** people baptised in Indonesia

ICP PARTNERS AND PROJECTS

Bangladesh

ICP partners with churches in the Chittagong Hill Tracts. The Bandarban Hills Churches of Christ (BHCOC) focus on evangelism, church planting, leadership training, women's ministry and youth ministry.

Strengths

The resilience of the BHCOC has been tested in 2022-23. Prior to disruption caused by conflict (see challenges below) they could take initiatives to restore and build their places of worship. The BHCOC is continuing to mature in partnership with ICP.

Challenges

Our partners in Bangladesh have experienced a difficult year since we last reported. Over the last year, separatist movements and the government have been involved in armed conflict. There have been travel restrictions which have impacted church members being able to trade their crops, and even meet as churches.

New Life

Despite difficulties, evangelism and baptisms are still a feature of the BHCOC's work.

Fiji

ICP partners with three churches in Fiji, based in Lautoka (Suwnei), Lomowai (near Sigatoka) and Vuci Rd (Suva). ICP has a MOU with the Nakasi Church, who use the GMP-owned facility.

Strengths

The churches continue to baptise new Christians and have an impact on their communities. The training they received from the COCOA Made in God's Image pilot about inclusivity for women, children and those living with disability is being slowly implemented.

Challenges

The resignation of Pastor Muneshwar from Lomowai was a shock, and the Lautoka church will need to move premises again.

New Life

The Lomowai Church was able to unanimously appoint a new pastor in June, who will now live in Lomowai. The Nakasi Church has also experienced an extended period of stability, as has the Vuci Rd Church.

India

ICP partners with churches in the poorest parts of the megacity of Mumbai.

Strengths

The leadership of Danny Gaikwad has given new life to ICP's endeavours and partnerships in Mumbai. Danny is an energetic and communicative leader who is looking towards the future.

Challenges

Increased compliance is making it difficult for foreign entities to fund Christian organisations in India.

New Life

We look forward to the coming years of seeing fruit borne from the activities of the churches in Mumbai, who are reaching out to marginalised groups.

Indonesia

ICP works closely with Asia Pacific International (API) in Bandung and the Christian Church Theological School of Indonesia (CCTSI) in Salatiga. These colleges train students to plant churches across Indonesia and focus on blessing their local communities.

Strengths

Strong, capable leadership and good governance structures enable stability in the training institutions and the rigorous training of evangelists and pastors, which includes a good percentage of women.

Challenges

CCTSI and API send students out into many different contexts in Indonesia. They work diligently at ensuring that their students are well supported whether they are working in relatively cosmopolitan regions such as Central Java or more conservative areas such as rural Sulawesi. In consultation with GMP, our partners had to intervene to ensure safe working conditions for students in remote island settings in the past year.

New Life

The training methods of both API and CCTSI equip their students to bring both the gospel and a set of skills to wherever they plant churches. This has been a successful technique to bring people to Christ and establish leaders who are part of the local community.

Papua New Guinea

The Melanesian Evangelical Churches of Christ (MECOC) are ICP's partners in PNG. There are over 100 churches in the East Sepik region. ICP partners with training centres in Gandep and Yamen.

Strengths

MECOC has an emphasis on, and fruitful results in, evangelism. Many respond to the gospel during outreaches and they are baptising people in the hundreds.

Challenges

A lack of safety due to issues over land escalating into a violent episode saw the Gandep Bible College shut down for an extended period.

New Life

Despite issues of poverty, violence and sub-standard infrastructure, there are many new believers in the MECOC churches.

The Philippines

Our partnership is with the International Christian College of Manila (ICCM), who train students for ministry and other vocations. There has also been a new partner – the Asian Christian Community Centre (ACCC) – which focuses on leadership training and discipleship.

Strengths

ICCM has recovered well from the pandemic and has welcomed back face-to-face teaching after Manila experienced significant lockdowns during the pandemic. There is a parcel of land that has been gifted to them which will mean that they can stop renting their current facility and build a new one of their own.

Challenges

Property matters have arisen with local squatters and there is a need to upgrade facilities.

New Life

A new partnership with the ACCC is putting an emphasis on local training and making stronger disciples.

Vanuatu

In partnership with the Conference of Churches of Christ in Vanuatu (CCCV), ICP focuses on supporting local churches, chaplaincy and improving church facilities.

Strengths

The governance structure of the CCCV is increasingly responsible for many of the functions that Global Mission Partners would have had in the past.

Challenges

Tropical cyclones earlier in the year again put stress on communities and vital infrastructure, communications and the production of crops. We are still keen to see a sustainable training facility in place.

New Life

In the most vulnerable nation to natural disasters globally, the resilience and emphasis on the mission of the local church will see new shoots of life emerging. Church teams are planning visits to experience this.

Vietnam

In house churches and small churches scattered throughout Vietnam, ICP focuses on leadership training and support.

Strengths

Several larger churches have joined the Churches of Christ, which has encouraged the existing leaders. There is a growing desire to understand what being 'Church of Christ' means.

Challenges

Transition of ICP relationship management has caused some disruption but it was good that John Gilmore and ICP Director, Craig Brown, could travel there in November 2022 for a successful handover.

New Life

The Churches of Christ are getting closer to being recognised nationally by the Vietnamese Government. In some areas, local governments have recognised the churches which allows greater freedom to minister.

ICP PARTNERS AND PROJECTS CONT.

South Sudan

ICP supports chaplaincy, training church leaders at Aweil Bible College and in other institutions. ICP is also providing local churches with basic ministry necessities in South Sudan.

Strengths

There is a vibrant entrepreneurial spirit to our leaders in South Sudan, and in a difficult context they consistently see opportunities. Churches are growing and we have also sent four emerging leaders to be trained in Uganda in the last year as part of a long-term training strategy.

Challenges

South Sudan is – not surprisingly – a challenging place to live, let alone minister. Infrastructure, including church buildings, is often poor. Communication and transport options are limited; poverty and an unstable political environment underlie these issues.

New Life

The churches are vibrant, training is widespread and there is a fruit being borne from that.

Zimbabwe

In partnership with the Associated Churches of Christ in Zimbabwe (ACCZ), ICP supports churches and rural evangelists, who minister to as many as four to six churches.

Strengths

A vital church culture, committed leaders and an increasing role for women post-pandemic has the ACCZ in a good position to face the future. A new generation of leaders are emerging who are ready for more responsibility.

Challenges

The rural evangelists lead multiple churches which is stretching as they face numerous contexts and issues, made more complex in the lead up to elections later in 2023.

New Life

The churches are beacons of hope and authenticity in Zimbabwe. They reach out to many people and see baptisms and renewals of faith.

ICP ASSOCIATE PARTNERS

One of the ways GMP supports missions is to make available practical, administrative and financial support for ministries that do not have an Australian presence, or the systems required for operational support.

Reaching Hands, India

Dr. Iris Paul founded the Reaching Hands Society in Orissa, building on the work of her late husband. Their son, Remo Paul, is the Director. The focus of Reaching Hands is on community health clinics, education, church planting and prison ministry. The door is opened for them to share the Christian message through their healthcare and education programs. The villages they work in are isolated and people there have few resources.

Geon Homes and Asia Gospel Mission, South Korea

Geon Homes continues to focus on the care, support and education of children. This includes residential (for abandoned children) and non-residential programs (local children). The second ministry, Asia Gospel Mission, supports pastors and churches in rural settings with few resources. This ministry is led by John Chae, the son of Dr. Yoon Kwon Chae.

Newbigin School for Urban Leadership, Birmingham, UK

Newbigin School for Urban Leadership is based in Winson Green, Birmingham, UK. This multiracial, inner-city neighbourhood was the seedbed for the industrial revolution where some of the first urban industrialised neighbourhoods began over 200 years ago. The centre is led by Dr. Ash Barker, and seeks to cultivate an environment for urban change, raising up resilient, compassionate and innovative urban leaders, able to shape our new urban world from the ground up.

LIFE-CHANGING COMMUNITY DEVELOPMENT

CHURCHES OF CHRIST OVERSEAS AID

Churches of Christ Overseas Aid (COCOA) is the international community development program of Global Mission Partners, partnering with communities living in poverty to realise their aspirations for wellbeing.

COCOA works in Asia, Africa and the Pacific and its focus is on safe water, primary health care, quality schooling, productive livelihoods and peaceful relations. We partner with local civil-society organisations that are part of the communities they serve, letting their aspirations for well-being drive our projects.

Image: Working in a vegetable garden made possible by Showers of Blessing Trust's (OSBT) water project, Zimbabwe, supported by the Australian Government through the Australian NGO Cooperation Program (ANCP).





NEW SYSTEMATIC AND LIFE-GIVING CHANGE

The work of development is not about providing stuff, or just about enabling communities to do more with their resources - it is about changing the systems and access to the systems that people live in.

A key story for COCOA this year came from Prakesh Tekadi slum in Mumbai, India. This is perhaps the poorest community we have worked with where, amongst many other things, people do not have government identification cards. Without the card, they are excluded from the government benefits that they most need.

Hosanna Ministries organised 'camps' to help people to get registered for their own identification card, enabling them to take hold of their rights as Indian citizens. The identity documentation camps are a small step in enabling the community to have access to systems, a direction in which COCOA is constantly advocating.

Other significant stories reflected the personal, life-giving impact that projects had on individuals. Shanti spoke of how literacy classes freed her from the embarrassment of 'signing' with her thumbprint. Soni spoke of the confidence she has now that she is able to sew and take orders to create garments for her neighbours. Others spoke of friendship in place of suspicion.

Department of Foreign Affairs and Trade (DFAT) Full Accreditation

The other big news this year is of our step up to the full level of accreditation with DFAT. This will enable us to support five projects with government funding instead of two, including the water project in Zimbabwe through Showers of Blessing Trust, vocational training in India through Hosanna Ministries and livelihoods and sanitation work in Bangladesh through the Community Advancement Forum (CAF). All these projects will receive significantly increased funding from the Australian NGO Cooperation Program funded by the Australian Government. The journey toward accreditation has also improved our analysis of gender, disability and environment in projects.

Act for Peace Partnership

We were also able to join with Act for Peace, the development agency of the National Council of Churches,

to double the size of their conservation farming work in Zimbabwe.

Capacity Building

We were able to run the Partnering Together for Stronger Communities course, bringing all of our key partners together in Thailand in April 2023. It has been a huge year of growth!

Emergency Response

Half of our new projects in 2022 were emergency projects. Unfortunately, this reflects the political instability impacting most of our partners and the climate instability which affects us all, but has the most significant impact on our partners. We expect more emergency responses per year through our partners and the ACT Alliance network that we are members for the foreseeable future. We are strengthening our systems in the area of emergency response accordingly.

COCOA Reference Group

Many thanks to the COCOA Reference Group who give us ideas and keep us accountable in our projects and policies. We recruited two new people for the COCOA Reference Group this year: Wendy Suma and Chris Morey, while Claire Egan joined as a new member from the GMP Board. Gordon Buxton and April Holmes continued as the stalwarts of the group. We introduced companioning, a process whereby a committee member gets involved with a project so they can help present it to the group for review. We also introduced Partner Spots, with one partner attending each meeting online, discussing their context and the challenges they face. This quickly became the highlight of the meetings.

COCOA Team

Thanks also to our COCOA team who work with a sense of calling, not just commitment. Many thanks, also, to our talented and committed partners who are always looking for more and better ways to serve their communities and whose passion provides us all the adrenalin we need!

YOUR IMPACT THIS YEAR

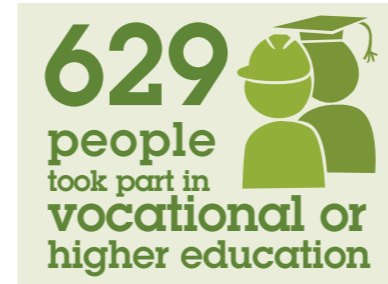
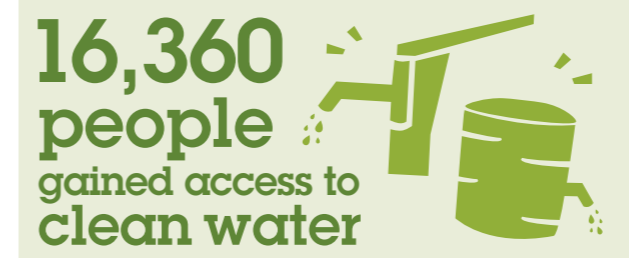
MEET SAMSON

Samson is 102 years of age. He has lived in Chiwekwe Village, Zimbabwe, since 2000. The village's water source has been an unprotected, hard to access, hand-dug well. He could only survive on it from January to September, the rest of the year everyone from the village would have to walk two kilometres to the river to collect water. Given his age, Samson was unable to travel that distance, so youths with ox carts would help bring him water. "It was really challenging for me as I cannot walk for long distances and so I always had to depend on the boys", said Samson. He felt it was a dream come true when he saw the borehole being dug just a short distance from his home. "What a great joy, especially for someone my age," Samson kept saying. "The borehole was not brought to our community by our foresight or cunning;



rather, it was by God's favour - moreover, it is so near to my home. I'm overjoyed. We do not have resources but if we did, we would organise a huge celebration as a sincere thank you," Samson concluded.

This year through COCOA projects:



COCOA PARTNERS AND PROJECTS

Fiji

Made in God's Image Pilot

This project brought a male and female leader from three churches together to explore the biblical idea that all people are made in God's image. The training includes gender equality, disability inclusion and child protection.

The workshop modelled a gender balanced and disability inclusive space by having a male and a female presenter, providing catering, child minding and some flexibility in the program. The latter enabled participants whose daughter has a disability to participate and also care for her. There was a high level of engagement by all participants.

The follow up workshop revealed that every pair had been involved in more than the requested two activities. The activities promoted gender equality, disability inclusion or child protection. The workshop materials were revised extensively on the basis of feedback from the participants and in preparation for rolling the program out in other locations.

Thailand

Partnering Together for Stronger Communities 2023

This project brought 12 of a potential 16 COCOA partner staff together for 10 days of interactive learning through input, partner presentations, project and cultural observation and networking.

The project achieved its goal of increasing the skills of COCOA partners in project management, contemporary development practice and organisational development to a significant degree.

Pre-Post test scores showed an increase of six percent in knowledge and a 17 percent increase in confidence. It also increased GMP's understanding of the issues partners face as numerous insights were captured in sessions where COCOA staff were the listeners.

This project received support from the Australian Government through the Australian NGO Cooperation Program (ANCP).

Social Development and Service Unit (SDSU) of the Church of Christ in Thailand (CCT)

Hill Tribes Sustainable Income Project

The project is working with targeted communities in the highland area of Northern Thailand to generate income through livestock production. This year the project worked with six Lahu communities to raise pigs, with each participating household receiving three piglets to raise.

The project assists community members in raising healthy animals by providing seed funding to purchase animals and technical training and advice in raising and selling pigs. Many participating households have been able to sell their animals and earn a small profit.

Bangladesh

Community Advancement Forum

Community Sustainability Project

This project works with hill tribe communities in the Bandarban Hills to improve their access to education, improve sanitation and provide income-generating activities.

The project continues to make good progress, despite local restrictions due to military activity.

Notable achievements included installing over 50 latrines in a number of villages, along with latrine maintenance and personal hygiene training. Community members, seeing the benefits of accessing latrines, built their own latrines.

Water storage was installed in two communities to ensure access to clean water during the dry seasons. Other activities include conducting workshops on child protection for 81 participants, and setting up a taxi service business to support two hostels, which enable rural children to access schooling.

This project received support from the Australian Government through the Australian NGO Cooperation Program (ANCP).

India

Hosanna Ministries

Vocational Education and Training 3

Hosanna Ministries offers courses in tailoring and computer skills in two villages in the Yavatmal District and various locations in the Mumbai Metropolitan Region. This year we added a beautician's course and driving lessons in Mumbai locations.

Tailoring participants learned skills which enabled them to earn income by sewing for their neighbours. This year the project trained over 176 women in tailoring.

In computer classes this year all the project students passed the government exam. Their certificate will assist them in finding a job or continuing with higher education. This year the project trained more than 176 students and over 66 percent were females.

Students in the beautician courses learn to apply make-up specialising in wedding make-up, hair styles and henna. This year the project trained over 40 women.

Driving lessons enable the students to gain a licence to drive taxis. This year the project trained 15 men to drive taxis.

The recent evaluation confirmed the usefulness of these courses as most participants were able to increase their income or continue to higher education.

This project received support from the Australian Government through the Australian NGO Cooperation Program (ANCP).

Prakash Tekadi Community Building Project 2

This project is working with the rag-picking slum community of Prakash Tekadi to increase the education and health of community members.

The project continues to focus on providing basic education to the children to support their learning at the local schools. The project teachers use audio and video tools to teach children alphabets, numbers, and poems in Marathi, Hindi and English. There are 40 children

who regularly attend. The sessions are run early in the morning to allow the school-aged children to attend school later in the day.

The project also arranged a number of workshops for community members covering topics such as personal health and hygiene, providing general advice on what free government services are available and assistance in obtaining national identification cards.

This project received support from the Australian Government through the Australian NGO Cooperation Program (ANCP).

South Sudan

Christian Mercy International

Return the Rains

This project is achieving its goal of significantly increasing the number of trees in the surroundings of Aweil. A further 5,000 seedlings were distributed and planted across a variety of public institutions, which were well represented at the training workshop. Follow up initially indicated very high levels of tree retention; however, six months in a number of trees have been lost. Inadequate 'protections' around the trees, reduced night-time policing and traffic in the marketplace were contributing factors to these losses.

Conservation Agriculture

Conservation Agriculture aims to retain surface moisture in dry climates. Unfortunately, participants in this project experienced a flood, wiping out their crops and threatening them with hunger, and making follow up challenging. The contribution of conservation agriculture toward limiting erosion was nevertheless affirmed by participants. The project is achieving its aim of positively evidencing whether conservation agriculture is accessible, valuable and viable in Aweil.



Bangladesh CAF - Community Sustainability Program and Partnering Together for Sustainable Communities are supported by the Australian Government through the Australian NGO Cooperation Program (ANCP).



Hosanna Ministries' Vocational Training Project is supported by the Australian Government through the Australian NGO Cooperation Program (ANCP).

COCOA PARTNERS AND PROJECTS CONT.

Education

This project works with 10 not-for-profit schools in the Aweil region to increase the quality of education accessed by the most vulnerable children. This year, four teachers completed their high school diploma. Ninety students with a disability, or who have neither parent, received three goats. Feedback from the previous year's distribution showed that the goats had increased by 10 percent (the follow up visit was much closer to the distribution than last year, where numbers had doubled by the time of the follow up visit). Days at school in the last week are now being reported and surveys reflected an average of just over four out of five. Disability, nutrition garden, school and management committee training activities were discontinued due to a reduction in funding.

Laid Foundation of South Sudan

Peace Building 3

This project began at the half-way point of the year. A peacebuilding workshop was attended by 194 community leaders (52 percent women) who are returnees or internally displaced people. The workshop aimed to motivate the leaders to mobilise peace building amongst their community through bringing the disputing groups together. Some had never met with members of other tribes. The workshops engaged them in topics such as mediation, empathy, bias, interest and the value of respect and tolerance. They were also equipped to manage differences and engagement in emotional and spiritual dimensions. The next phase will roll out smaller peace training initiatives within the communities of those who attended the workshop.

Vanuatu

Conference of Churches of Christ in Vanuatu (CCCV)

Design Five Year Strategy

This project aims to develop a strategy for the support and inclusion of vulnerable people in community and CCCV life and improve readiness for disasters within the CCCV national office and communities.

The Community Development Officer, working with volunteers, has been carrying out surveys as widely as practical in CCCV communities. There have been 735 household surveys undertaken in Santo, Pentecost, Port Vila, Ambae and Tanna. With two cyclones occurring in May, this project has been put on hold to prioritise emergency assistance for those impacted by the cyclones.

Zimbabwe

Khayelihle Children's Village (KCV) Family 2

KCV's 43 residents are happy and healthy and developing well. There are now 12 adults, some at university and others attending vocational school. The project aims to find family-like situations for each of the residents. This year, as part of its effort to promote fostering, KCV hosted a very successful visit by Churches of Christ Women at the village. As a result, two children spent the Christmas season with two different households. There were three family reconnections and six school leavers this year. KCV organised a third workshop of community workers and representatives focused on what can be done to prevent the abandonment of children.

Organisation of Showers of Blessing Trust (OSBT)

Water

This project drilled 15 wells which provided access to clean drinking water for more than 15,000 people. OSBT operations have been impacted by the changing weather patterns this year; however, they have managed to keep on track with installations. With the assistance of community leaders and community members, more than 10 surveys were conducted. There were eight water and livelihood training workshops held, and each was attended by more than 50 community members. To promote environmental awareness, OSBT distributed 50 tree seedlings to a secondary school. The students have embraced the project. One of the children remarked, "I'll take care of my tree and hope to visit it even after I finish school."

This project received support from the Australian Government through the Australian NGO Cooperation Program (ANCP).

Act for Peace-Christian Care Building Sustainable Livelihoods and Climate Resilience

This is a project managed in partnership with Act for Peace. The project goal is to ensure communities are more resilient and better able to adapt to the threat of climate induced displacement.

This year, 1,856 community members participated in training sessions on climate-related hazards and natural disasters, 736 community members had improved access to sufficient food, 164 women were supported to assume leadership roles, three Disabled Persons Organisations were actively involved with the project, and 1,667 impoverished women and men increased their incomes.

This project received support from the Australian Government through the Australian NGO Cooperation Program (ANCP).



Showers of Blessing Trust's (OSBT) project is supported by the Australian Government through the Australian NGO Cooperation Program (ANCP).



Act for Peace - Christian Care's Conservation Farming Project is supported by the Australian Government through the Australian NGO Cooperation Program (ANCP).

EMPOWERING INDIGENOUS MINISTRIES

INDIGENOUS MINISTRIES AUSTRALIA

GMP seeks to partner with, and among, Australian Indigenous people, focusing on Indigenous ministry and development. Our Indigenous ministries have been developed and planned by a council of Indigenous people to allow for in-depth direction-setting from key Indigenous leaders and communities around the country.



Image: Karuna Yarta Tour, Adelaide, South Australia.



EMBRACING NEW LIFE

In the pursuit of fostering spiritual growth and community empowerment over the last year, Indigenous Ministries Australia (IMA) has continued to walk alongside our Indigenous partners to see them shine as beacons of hope, dedicated to supporting Indigenous communities across the nation.

Building Strong Foundations

The foundation of any successful ministry lies in establishing deep connections within the communities it serves. IMA has focused on forging strong relationships with Indigenous leaders, community Elders and local organisations. Through mutual respect and cultural sensitivity, IMA has been able to lay a solid groundwork for its initiatives and projects, ensuring their relevance and long-term sustainability.

Nurturing Spiritual Renewal

IMA believes that encouraging new life starts with nurturing spiritual renewal within Indigenous communities. Through your support for the leaders of our Indigenous partners we've been able to help facilitate Indigenous-led community gatherings, Bible studies and church meetings. These have been instrumental in fostering spiritual growth, revitalising faith and encouraging hope among Indigenous Australians. Recent highlights include the Port Hedland church celebrating 10 baptisms, ministry trainee in Melbourne, Lonny Bendessi, graduating with a Diploma of Ministry from Ridley College and new leadership with Peter and Francis Jetta at the Bunbury Aboriginal Church in Western Australia.

Empowering Indigenous Youth and Leaders

The future lies in the hands of our youth, and IMA recognises the importance of empowering Indigenous young people to overcome challenges and embrace new opportunities. Through youth-focused programs such as Morditj Keila in WA and Dareton Youth and Community Centre (NSW) mentorship initiatives, and educational support, such as IMA Pathways, we have been instrumental in equipping Indigenous youth and young leaders with

the tools they need to succeed personally, spiritually and to furthering their learning. By instilling a sense of pride in their heritage and fostering self-belief, IMA is helping to shape a new generation of confident and resilient ministry leaders.

New Opportunities to Discover and Learn

It's been an exciting time of growth in our IMA Discovery opportunities over the last 12 months with increasing Songlines tours as well as piloting two new three-day Discovery opportunities. The new three-day experiences will take place in rural Queensland and outback South Australia. They promise to offer incredible insights and connections with local First Nations Christian leaders and communities.

Enhancing Cultural Preservation

Preserving and celebrating Indigenous culture is vital to the revitalisation of communities and to seeing new life emerge. IMA recognises this and actively supports initiatives that promote cultural preservation, language revitalisation and the transmission of ancestral knowledge. By working closely with community Elders, IMA ensures that traditions and cultural practices are not lost but cherished and passed onto future generations. This celebration of Indigenous culture breathes new life into communities, fostering a sense of identity, pride and belonging.

Highlights

Our highlights over the last year at IMA have come from our partnerships with you, our valued partners and our shared commitment to fostering new life within Indigenous communities across Australia. Through this dedication to building strong foundations, nurturing spiritual revival, empowering youth, opportunities for discovery and preserving culture, together we've become a catalyst for positive change. As we move forward, it is with a renewed sense of hope that IMA continues to make a lasting impact, seeing new life and partnering together with Indigenous Australians for generations to come.

YOUR IMPACT THIS YEAR

MEET LESLIE SCHULTZ

A Faithful Ngadju Leader Preserving Heritage and Protecting the Land

Les Schultz, one of the leaders of IMA partner ministry at Norseman and a respected Ngadju leader, is not only dedicated to preserving the cultural heritage of his people but also exemplifies the transformative power of faith.

As a devout Christian, Les believes that spirituality and cultural identity can coexist harmoniously, enhancing the Ngadju community's resilience.

Les' remarkable leadership extends to his work with the Ngadju Ranger Program, where he tirelessly strives to protect and conserve the land. With his deep understanding of traditional ecological knowledge, he advocates for sustainable land management practices, promoting the harmonious coexistence of nature and culture. Under his guidance, the Ngadju Ranger Program has flourished, empowering Ngadju people to actively participate in land conservation and management efforts.

In recognition of his exceptional contributions, Les had the honour of representing the Ngadju community at the recent 22nd session of the United Nations Permanent Forum on Indigenous Issues in New York. His visit



provided a platform to share the challenges faced by Indigenous communities in Australia and the vital role they play in preserving biodiversity and cultural heritage. As Les says, "We want to bring the solutions to the table, but we can only bring them if we're invited to talk."

Les Schultz's unwavering dedication, grounded in both his Christian faith and profound connection to his Ngadju heritage, serves as an inspiration to people around the world. He believes the Voice to Parliament referendum could enable Indigenous Australians to promote the country's progress. "The best thing that can happen is that you give Indigenous people a voice, globally, nationally," he said.

This year you helped IMA achieve:

 **8** Indigenous ministry partners

Partners Across **4 States** in Australia 

3  Associate Indigenous Ministry Partners

 **3** IMA Pathways Participants

2  New 'On Country' pilot experiences

Average of **150** Young People  accessing the Dareton Youth and Community Centre per week

IMA PARTNER HIGHLIGHTS

Western Australia

Bunbury

- Newly appointed associate Pastors Peter and Francis Jetta are helping provide new leadership direction alongside senior leaders, Pastor Greg and Margaret Little.
- Noongar Language Classes continuing at the church.

Port Hedland

- Experiencing a growth in worship ministry with new musicians joining the team.
- Celebrating an average of one-two baptisms each month.

Norseman/Esperance

- GMP partner Les Schultz is on the WA Indigenous Ministries Australia (IMA) Council. He's a Ngadju Elder and was a delegate at the 22nd Permanent Forum on Indigenous Issues in New York, USA. This was in connection with his role with the Ngadju Conservation Aboriginal Corporation.

Morditj Kiela (Perth)

- Theresa Sese is supporting the Keys4Life driving program, providing assistance to the young people involved.

New South Wales

Dareton, NSW

- The Dareton Youth and Community Centre is looking to strengthen its governance and long-term sustainability by incorporating within the next year.
- Formation of the Dareton Youth and Community Centre Management Working Group.

Queensland

Dalby, QLD

- First 'On Country' immersion trip with the Dhiyaan community. Dhiyaan, meaning 'family' in the Goemeroi language, is an Aboriginal owned and run corporation as well as a Christian community. IMA is now offering three-day retreats for church groups, leadership teams, study groups or anyone looking to learn more about Indigenous culture, faith and worldview in a relaxed, rural retreat setting.

South Australia

- Tjilgamooda Church emerging leaders, Shellander Champion and Leeroy Bilney, developed a new vision and growing connections to the wider church in SA.
- First SA immersion trip with Dusty Feet Mob and Kurna elder, Uncle Frank Wanganeen.
- Developing 'On Country' discovery experiences with Dusty Feet Mob's Robert Taylor – Kokotha and Yankunytjatjara leader.

Victoria

- Melbourne Indigenous Church Fellowship Pastor Kim Jongil was able to attend the 2023 Kimberley Christian Convention in WA and build on strong networks and connections there.
- The IMA Pathways Program assisted Senior Indigenous Christian leader Uncle Don Hayward to attend his mentee Lonny Bendessi's graduation. Lonny received a Diploma of Ministry.

YOUR IMPACT THIS YEAR

MEET LONNY

Emerging leader and Aboriginal Christian, Lonny Bendessi, proudly marked a significant milestone in his journey with his recent graduation from Ridley College in Melbourne with a Diploma of Ministry. Lonny's dedication and perseverance have led him to this momentous achievement, inspiring others with his faith and commitment to his ministry training. Lonny is originally from the remote South Australian town of Ceduna and he is mentored by respected Aboriginal Christian leader, Uncle Don Hayward. With his newfound knowledge and qualifications, Lonny is poised to make a positive impact within his community, bridging cultural divides and fostering Aboriginal Christian understanding in his role as trainee minister with the Melbourne Indigenous Church.



CONNECTING YOUNG PEOPLE IN MISSION

EMBODY

embody exists to empower, encourage and support a national community of young people who are passionate about mission. We want to see God's Kingdom come, to be the best stewards of the resources we currently have, and to support those who are the most vulnerable and marginalised in our world.



Image: The 2022 Safe Water September team from Hawthorn Church of Christ, South Australia.



NEW, PRAYERFUL MISSION, JUSTICE AND ADVOCACY

embody's aim is to develop and cultivate connections in a national community of young people passionate about and participating in mission locally, nationally and globally.

The Local Church

This includes participating in Global Mission Partners' (GMP) initiatives and mission activities through the local church. Because we know that emerging generations are passionate about justice, mission and making the world a better place, we have tried to give particular attention and consideration to the ways we can invite young people who may feel they're on the margins of their local church communities. We encourage connections between other mission and justice-oriented young people across Australia. We support local churches to speak confidently with young people about justice and mission as part of their faith. This is a rich area for development and innovation. We're excited to continue to work with local churches and State Conferences to resource and engage young people to bring their faith into the world through prayerful mission, justice and advocacy activities.

Safe Water September

One of our key avenues for people of all ages to engage is Safe Water September (SWS). This year's challenge was our biggest and most successful yet, raising over \$183,000 for safe water projects implemented through GMP's partners Showers of Blessing Trust in Zimbabwe, the Conference of Churches of Christ in Vanuatu, and the Community Advancement Forum in Bangladesh. We were excited to welcome new church groups to the SWS community for the first time. It was a privilege to visit local church youth groups and engage young people in conversation about mission (and have a bit of fun at the same time).

\$183,000 for SWS was a huge result — smashing all previous records — but the most exciting part is that it represents a community of more than 1,900 people (challenge takers and donors). These people are actively following Jesus' example in bringing transformation to communities (through our partners), and around 300

people aged seven to 30-years-old who are actively advocating for the rights of people to have access to safe water close to home.

Mission Communities

In other areas of our activity, we made the decision to cease our Mission Community coaching program due to lack of interest. We are pleased with the impact Mission Communities had on the people who chose to participate, and our passion for walking alongside local church leaders to support missional young people will continue throughout embody's program and project offerings.

Podcasts

We enjoyed producing our nine episodes of Mission Unplugged this year. Guests joined us from across Australia, and we heard stories from local church ministries, national para-church development agencies, and other creative faith expressions. We love showcasing the diversity of ways people are following Jesus and putting their faith into action, and we hope that the Mission Unplugged feed continues to be an inspiration to young people exploring the unique ways God has equipped and called them for mission.

The embody Discord community explored two new books through our Reading Mission book club podcast: *The Plum Tree in the Desert* by Naomi Reed, and *Credible Witness* by Darren Cronshaw. Dialoguing together about these books helped us unpack and explore some of the conversations that take place across our country and throughout our churches, and that young people are exploring every day.

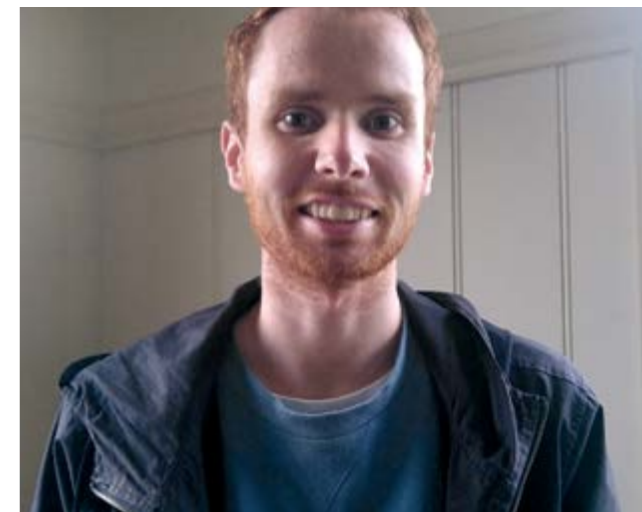
New Ways of Working Together

The opportunity to partner with young people and churches to live out God's mission in the world is a continual privilege. After this year of changes and new opportunities, we look forward to new ways of working together, and to seeing all the new things God has in store for young people throughout our churches.

YOUR IMPACT THIS YEAR

MEET JIMMY

Jimmy is a part of the Safe Water September community. He's also a visual artist based in Tasmania. He explores how cartooning and visual art can be a part of expressing his faith in ministry and mission as @fands.studio on Instagram. You may have seen some of the art pieces he made about Safe Water September on embody's social media. We interviewed Jimmy on Mission Unplugged.



"Serving has always been really important to me... getting in on the kids ministry and the youth ministry, I serve in both of those at my church. I definitely feel like God has called me and calls all of us to outreach and I have always wanted to use what I've been given to share."

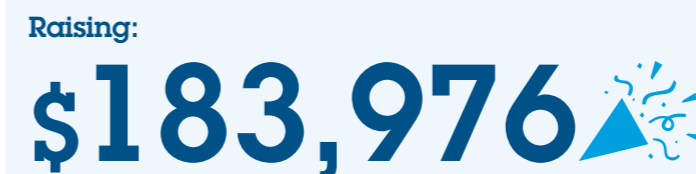
Now Jimmy is using his talents in cartooning and illustration to create home-grown resources for local churches. His illustrations are bright and colourful, in line with Jimmy's love of fun and engaging ministries, like camps. "[I love ministries that] get a bunch of kids together and show them love, show them that God cares about them, and have a lot of fun doing it. And [show] that Christians are fun."

The embody community is filled with creative young people like Jimmy who are finding diverse ways to live out God's mission in the world. It's a privilege to journey with them and observe, encourage and coach the development of a thriving network of young people engaged in mission.

This year embody's podcasts achieve



And you helped Safe Water September achieve:



PEOPLE & PROGRAMS

People and programs are intimately linked in GMP. We don't have programs without people behind them, people sustaining them and people benefitting from them.



Image: Tubewell installed in Happy Hills Village, Bangladesh. Bangladesh CAF – Community Sustainability Program – is supported by the Australian Government through the Australian NGO Cooperation Program (ANCP).



Dominic Pisconeri (left) and Blake Moore (right), from Devonport Church of Christ, visited David Reddy (center) and the Lautoka Church of Christ, Fiji.

PARTNER VISITS

Global Mission Partners is passionate about creating opportunities for our church partners to connect with our work, both in Australia and overseas. One of the ways we seek to deepen relationships between our Australian supporters is through GMP Partner Visits.

There is nothing quite as transformative as spending time face to face with our partners in their own country and local context. Experiencing firsthand the love and faithful dedication of our partners to their communities is inspiring. Knowing that the prayers and financial support of our Australian supporters makes a real difference in the communities where our local partners serve is life-changing. Every overseas partner visit provides an opportunity for some of our Australian supporters to listen and learn from our partners and to see life and faith from new perspectives. These experiences provide an opportunity to challenge our own walk with God and our approach to missional discipleship.

GMP Partner Visit: Devonport Church Return to Fiji after Three Years

In August 2022, Pastor Blake Moore and Dominic Pisconeri from Devonport Church of Christ returned to Fiji to spend time with Pastor David and Christy Reddy at Lautoka.

“We began by catching up with Christy and David and their two children, Destiny and Joy. As you would expect we noticed some things have changed! The Reddy’s have moved house to a home that is large enough to hold church services; David had an overhaul of his tattoo that he has wanted for many years, which is more reflective of this godly man’s life – Faith over Fear; Christy, well she just doesn’t change: such

a generous and loving heart, and such a great cook! Destiny has graduated with a medical degree and is currently working as an intern in Lautoka Hospital. She is living at home, which is such a blessing for David and Christy. Joy continues in his engineering studies in Suva and is working on being an Electrical Engineer. It was great to have him on mid-semester break while we were there!

The first evening was spent investing in leaders. After discussing what it means to be a leader in the local church, Pastor Blake demonstrated servant leadership by washing Pastor David’s feet. What followed was an amazing heartbeat of servanthood as each of the people present took turns washing and drying each other’s feet. Putting the teaching into practice was a powerful statement and demonstrated the humility required to serve and lead others.

Over the following days, Blake powered through two outreach events and a Sunday morning sermon. The sharing in prayer, worship and food reignited the partnership in a more personal way than could have been achieved while apart during the pandemic. The Holy Spirit moved amongst the people, and the growth in maturity and faith of the church members was evident.

Once again, I was reminded of the importance of connection and how our God uses proximity of relationship to grow us, sharpen our faith and encourage each other in difficult times. As relationships deepen, the façade of fear drops and real conversations happen, and change can take place.

As I stand in the presence of Jesus, in partnership with Lautoka Church of Christ, I find myself transformed every time.”

PEOPLE IN MISSION

GMP continues to support locals and the sending of people into mission settings, both as volunteers and as those who are supported financially.



BJ and Chip Mpofu

BJ continues to mentor, resource and encourage Zimbabwean church leaders. This past year he has visited many new churches to encourage them to build chapels to service their communities. Most of these groups have many members that can mould and burn bricks. BJ is on the Board of the Zimbabwean Christian College and is a key coordinator for Global Mission Partners’ visits to Zimbabwe when they are possible. BJ has begun the process of selecting leaders to succeed him when the time comes for his retirement.



Brendon Garlett

(Concluded October 2022)

Brendon was pioneering culturally relevant and relational outreach opportunities among the local Indigenous community. He also worked closely with Mildura Church of Christ and Ilker Delii and the team at the Dareton Youth and Community Centre, NSW. We were saddened to lose Brendon when he resigned to take up a position with the Anglican Church in Nowra in late 2022.

ASSOCIATES IN MISSION



Jamie and Claudia Boland

Jamie and Claudia met in Sudan in 2004 while serving with different Christian organisations. Two years later they returned home to start a family and continue theological studies. In 2013 the Bolands returned to serve full-time in the newly independent nation of South Sudan. In early 2014 they were forced to relocate to Uganda due to the ongoing civil war. Jamie joined the faculty of Africa Renewal University where he serves as a senior lecturer in theology. During their time in Uganda, the Bolands have been able to train more South Sudanese pastors than in their time in Sudan, along with pastors from Uganda and the surrounding East African nations. Jamie and Claudia concluded with GMP in June 2023.



Dr Ash and Anji Barker

Ash has intentionally lived on the front line of diverse urban poverty for over 30 years and seen the unique potential of urban people and places released around the world. Since 2014, the Barkers have been based in Winson Green, Birmingham, UK. They founded Newbiggin House, a live-in community that has also started two local congregations as well as many innovative organisations. Ash and Anji are United Reformed Church Ministers of the Lodge Road Community Church in Winson Green with Anji also leading Newbiggin Community Trust. A strategic focus for Ash is founding and leading Seedbeds that grows diverse leaders and communities into fullness of life. Seedbeds also now runs the Newbiggin Pioneering Hub to discover, nurture, empower and release a new generation of pioneers able to see local communities around the UK flourish in God’s love and shalom.



actalliance

Damage after Tropical Cyclones Kevin and Judy (Efate), Vanuatu.

EMERGENCY RELIEF

GMP is a member of the ACT Alliance, a network of church-based humanitarian agencies across the world. Where GMP does not have an established partner that can respond to a crisis, we work through ACT Alliance members who are well positioned to do so.

Türkiye-Syria Earthquake

In February 2023 two very strong earthquakes (magnitude 7.8 and 7.5) hit central Türkiye. Death and damage spread over Southeast Türkiye and Northern Syria, affecting over 23.08 million people. GMP is working through ACT Syria Forum (ASF) members who are well positioned to provide support. Key needs range from heavy machines for debris removal to safe spaces for women and girls.

Communities Affected by Ukraine Conflict

Russia launched a military offensive in Ukraine on 24 February 2022. Intense military activity resulted in loss of life, injuries and the mass movement of the civilian population throughout the country.

GMP is working through ACT Alliance members to provide emergency basic supplies like food, WASH, health, psychosocial support, shelter, cash and voucher assistance and logistic support.

Volcanic Eruption and Tsunami, Tonga

On Saturday evening, 15 January 2022, a large underwater volcano erupted off the coast of Tonga, causing a tsunami. The sound of the explosion could be heard as far as Fiji, over 800 kilometres away.

GMP is working with Act for Peace to support those in Tonga impacted by the tsunami and volcanic ashfall. Our funds will contribute essential first aid kits to the Act for Peace response.

Pakistan Floods

In the second half of 2022, Pakistan endured severe monsoon weather. This caused widespread flooding and landslides with severe ramifications for human lives, property and infrastructure. Around 33 million people across Pakistan were affected by the rains, floods, and

landslides. Working through ACT Alliance members Christian World Service Asia and Norwegian Church Aid, Global Mission Partners raised \$11,850 to contribute to flood-affected communities have access to food, health and WASH services appropriate to their needs.

Cyclone Judy and Kevin, Vanuatu

Tropical cyclones Judy and Kevin (both of Category 4 intensity) made landfall over Vanuatu on 1 and 3 March, 2023. Although not life threatening, the two cyclones caused widespread low-impact damage. Conference of Churches of Christ in Vanuatu (CCCV) initiated an emergency response targeting low income groups.

Tarpaulins and mosquito nets have been distributed to 1,355 beneficiaries in Tanna, Port Vila, Pentecost and Greater Luganville. The distributed seeds and non-food items helped establish medium-term food security. The cyclone-damaged water supply system in Tanna was repaired. This lowered the incidence of water borne disease by half.

Christian Mercy International (CMI) Food Gap, South Sudan

In South Sudan, there is always a ‘hunger season’ before the harvest. In the second half of 2022, this was exacerbated by the World Food Programme’s inability to source grain because of the war in Ukraine. CMI responded to the government’s request for NGOs to step in. Staple food items were distributed monthly to 50 households (average size 11 people) for the period July to September. Women made up 80 percent of the recipients.

Christian Mercy International (CMI) Sudan Returnees and Refugees, South Sudan

In May 2023, conflict in Sudan drove many to flee to South Sudan. CMI is located near the border with Sudan and was ideally placed to respond. CMI was again requested by the government to step in and has been given responsibility for 150 returnees and refugees. Tarpaulins, mosquito nets and blankets have been distributed to this group as well as food support for 35 breastfeeding or pregnant mothers in the group.

YOUR IMPACT THIS YEAR

MEET MADELINE

Peter Bryant from the Conference Of Churches of Christ in Vanuatu (CCCV) has continued to visit many members of the churches in Port Vila who required emergency help and support after the damages of Tropical Cyclones Judy and Kevin. One lady was Madeline.

Madeline has displayed resilience and determination to rebuild her life.

Her husband passed away and some family came to live with her. The house they lived in was already damaged from Tropical Cyclone Pam. So, when Tropical Cyclones Judy and Kevin hit, the entire structure was demolished.

Faced with the challenge of finding a new place to live, she must now pay rent. The emotional and financial burdens of losing her home are high.

Peter reported, “Madeline set to tidying all the timbers to underneath some she-oak trees at the front of the property, with the assistance of her family who were still nearby”. Madeline could not face removing the old bathtub, hand basin and toilet from the foundations that remained.

Peter also reported that Madeline wants to build herself a new smaller house. “We gave Madeline a large heavy-duty green tarpaulin for her newly planned house, to protect it during the building stage. The cash allowance



and gardening kit will help her with the day-to-day needs she has now that she has the extra financial burden of renting,” he said.

Through it all, Madeline remains grateful for the help she received and remains hopeful for a brighter future. “Thank you for your heart in coming and not forgetting me,” Madeline said.

Thank you for your generous support towards the Vanuatu Cyclone Response.

\$22,320 was raised for this appeal. CCCV will continue to support communities and undertake further activities in line with the needs identified in the Rapid Needs Survey.



GMP staff. From top left: John Lamerton, Nick Wight, Mitchell Salmon, Remy Sese, Melinda van Vuuren, Suzanne Hayes, Belinda Burt, Colin Scott, Colin Battersby, Rachel Conteh, Katrina Davidson, Eva Ntege-Dhizaala, Gavian Chan, Lisa Szepessy, Jan Bayliss, Emily Wood, Sheree Crouch, Craig Brown, Melissa Parkinson, and Elise Andrews.

MEET THE TEAM

*Most GMP staff are part-time.

STAFF MEMBERS*

Executive Team

Executive Officer	John Gilmore (concluded Nov 2022)
Chief Executive Officer	John Lamerton (commenced Jan 2023)
Deputy Executive Officer	Craig Brown
Chief Finance Officer	Cathy Chang
Director of Community Education	Colin Battersby

Programs

Programs Executive, ICP Director	Craig Brown
COCOA Director	Colin Scott
COCOA Partner Education Officer	Jan Bayliss
COCOA Program Officer	Suzanne Hayes
COCOA Program Officer	Eva Ntege-Dhizaala
IMA Coordinator, East	Nick Wight
IMA Coordinator, West	Remy Sese

Operations

Operations Executive, Chief Finance Officer	Cathy Chang
Finance and Administration Manager	Lisa Szepessy
Bookkeeper	Katrina Davidson
Receipting Assistant	Belinda Burt
COCOA and Partner Finance	Melinda van Vuuren
Supporter Care	Sheree Crouch

Engagement

Engagement Executive, Director of Community Education	Colin Battersby
Director of Communications and Design	Elise Andrews
Director of Marketing and Fundraising	Gavian Chan
Digital Content Manager	Melissa Parkinson
Media and Communications Manager	Rachel Conteh
Data Coordinator	Terence Ng
embody National Coordinator	Mitch Salmon
embody Network Developer	Emily Wood
Church Engagement Coordinator	Val Zerna (concluded December 2022)

BOARD MEMBERS

Barrie Yesberg

Board Chair and Executive Member, WA

Ordained Minister of Churches of Christ, Chaplain to Returned Services League WA, Retired Australian Federal Police Chaplain and Royal Australian Navy Reserve Principal Chaplain. Indigenous missionary experience with the Federal Aborigines Mission Board. Involved in Warnbro Community Church in Western Australia. Married with four children, and nine grandchildren.

John Gilmore

(Concluded November 2022)
Executive Officer, VIC

Master of Theology. Executive Director of Mission and Ministry for Churches of Christ VIC/TAS for 10 years. President National Council of Churches in Australia (NCCA), Past Act for Peace Director and Chair of the Board, former Micah Australia Director. Ten years active involvement in Christian Conference Asia.

John Lamerton

(Commenced January 2023)
Executive Officer, NSW

Master of Missional Leadership. 16 years serving with international aid and Christian mission organisations such as World Vision, Habitat for Humanity, Alpha Australia and Worldshare Australia. Married to Tara and with their two daughters, worship at Coast Community Church on the NSW Central Coast.

Gordon Buxton

Company Secretary, Member COCOA Reference Group, Member Finance Risk and Audit Committee, NSW

Established Yooralla Youth Ministries and Yooralla Overseas Development Fund, which is a registered aid and development fund. More than 30 years' experience as a consultant in customer focused operations and human resources management.

Naomi Beames

(Concluded June 2023)
Treasurer, Chair, Finance Risk and Audit Committee, SA

Bachelor of Commerce (Accounting) CPA, over 20 years' experience in accounting, tax and risk management including churches and not for profit organisations. Her previous paid role was heading up the Tax Team at BHP Billiton in SA. As well as being a mum, Naomi studied at Tabor College and completed a Masters of Divinity at the end of 2022. Naomi worships at Unley Park Baptist, however she regularly preaches at smaller churches in a variety of denominations. Recently appointed as Chief Operations Officer with Churches of Christ in SA and NT.

Claire Egan

Member of Board Executive, Member of COCOA Reference Group, Member of the Policy and Governance Group, VIC

Working for Churches of Christ Vic/Tas for the past 14 years. Involved in various leadership positions in local churches including boards, committees, and youth ministry. Studied communications and worked in para-church organisations for most of her career.

Symon Pratt

Member of Board Executive, VIC

Graduate Diploma of Divinity, Masters in Arts (Ministry Practice), Bachelor of Business (Marketing) and a Graduate Diploma in Business (Travel and Tourism). Executive Pastor at one2one Church of Christ, Ballarat, and previously at Bundaberg Church of Christ. Formerly Associate Pastor at CrossCulture working with children, youth and university students including ChildSafe Training, leadership development, and leading local and international mission trips.

Dr Mark Riessen

Member of the Policy and Governance Group, SA

Doctor of Ministry. Mission and Ministry Director with Churches of Christ in SA and NT. Director of the Tabor Churches of Christ Study Centre where he lectures in Effective Community Engagement, Leadership for Ministry and Churches of Christ Identity.

Vandana Thavare

Member Finance Risk and Audit Committee, Member ICP Reference Group, WA

Degree in Physiotherapy. Graduate Diploma in Divinity. Associate Pastor (part time) at Lifestreams Christian Church Karawara. Visiting (Churches of Christ) Chaplain at Curtin University, Perth since 2021 and Prison Fellowship WA Volunteer since 2021. Has worked in far north WA and in the NT with several Indigenous communities. Born in India to Bhimrao and Kanta Thavare, she moved with her family to Fiji where they served as missionaries with OMB (now GMP) from December 2001 until 2006.

Janet Woodlock

Deputy Board Chair, ICP Reference Group, VIC

BSc, Dip Ed, MDiv, Cert IV in Workplace and Business Coaching. Teacher and ordained Churches of Christ minister. Janet works as a coach and trainer with Arrow Leadership. She has worked for the National Council of Churches, Churches of Christ in Australia, and Churches of Christ in Vic/Tas. Janet is working as the Chaplain at Kilvington Grammar School.

FINANCIAL REPORT

Finances are important - they put into action the compassion, care and desire to make a difference for those who support GMP.

The following financial statements have been prepared in accordance with the requirements set out in the ACFID Code of Conduct. For further information on the Code please refer to the ACFID website at www.acfid.asn.au.

The full statutory financial statements are available on our website at www.gmp.org.au/annualreport

Image: Student and his caretaker at Emmanuel School recieved goats to help pay for his education, in South Sudan.



Finance Comments

General Comments

We are very grateful to all our supporters who have been open-handed to our mission, especially in light of the financial pressures many have experienced this year due to inflation and cost of living rises. Your generosity is deeply appreciated.

Thankfully the overall level of income has increased this financial year, as a result of some generous bequests and increased support in Australian Aid grants from DFAT. This is no small accomplishment, and we are grateful to have moved from the “base” level of support to a fully accredited member of the Australian NGO Cooperation Program (ANCP). This grant funding allows us to scale up our overseas relief and development programs with our COCOA partners.

Donation income this year declined 15% but fundraising appeals in FY23 were steady overall. Safe Water September saw a 10% increase, Christmas Offerings grew 39% and our EOFY Appeal achieved similar levels to last year. We unfortunately raised less from Great Gifts and the Easter Appeal (Walk for Hope) than previous years. While the results are mixed, these appeals allow us to highlight the needs of our partners and help support their life-changing projects across IMA, ICP and COCOA activities.

We are grateful to the many Churches of Christ (and others) across Australia for their trust in Global Mission Partners to facilitate their contributions toward Christian mission and development, both overseas and

in Australia. Church support has unfortunately waned in recent years, but this is understandable in light of local church financial pressures. Our hope is to continue being the partner of choice for churches looking to make an impact throughout the world, collaborating with and supporting our local partners.

Most significantly, we saw the retirement of John Gilmore (15 years) and Val Zerna (nearly 19 years). We thank them both for their long and dedicated service for which their leave, long service and accrued other benefits were paid in this financial period. Global Mission Partners welcomed John Lamerton as the Executive Officer in late January and we appointed Cathy Chang as CFO in May to help manage our finances as a result of becoming fully accredited with DFAT.

Most importantly, partner support has increased 37% allowing more funds to flow to our partners. Again, this is due to increased grant funding thanks to DFAT’s ANCP support.

It’s also important to note that Global Mission Partners has moved to consolidated reporting across its entities (GMP, GMP Extend and GMP Assist) which will provide a fuller picture of our financial position and achievements.

Finances at a Glance

Global Mission Partners operates with three distinct funds. Each is managed and accounted for separately.

International Church Partnerships (ICP)

The International Church Partnership fund supports church projects with a priority on evangelism, church and leadership development and as well as investing in programs that care for adults and children. In 2022-23 \$582,353 was made available for program implementation, support and community education.

Churches of Christ Overseas Aid (COCOA)

Churches of Christ Overseas Aid is an approved fund under the Overseas Aid Gift Deduction Scheme and satisfies the requirements for Department of Foreign Affairs and Trade Full Accreditation. COCOA has

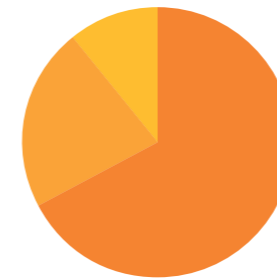
policies and priorities that guide the use of funds in keeping with such requirements. In 2022-23 \$1,925,517 was made available for program implementation and community education. This figure represents those funds fully acquitted as being spent on activities as at the end of June.

Indigenous Ministries Australia (IMA)

Indigenous Ministries Australia is supported through the Indigenous Partnership Fund. In 2022-23 \$275,254 was made available for specific projects, program implementation and community education. Specific giving of \$58,300 in support of the Indigenous Pathways project was received and similar specific giving is quarantined from the Redress matters.

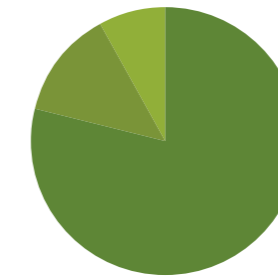
Finances at a Glance cont.

International Church Partnerships (ICP)



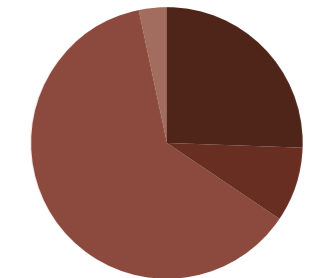
Program + Com. Ed. 67.27%
Administration 22.11%
Fundraising 10.62%

Churches of Christ Overseas Aid (COCOA)



Program + Com. Ed. 78.96%
Administration 13.19%
Fundraising 7.85%

Indigenous Ministries Australia (IMA)



Program + Com. Ed. 25.76%
Administration 8.73%
Redress 62.32%
Fundraising 3.19%

Breakdown by Country

Funds sent to ICP Programs

ICP Program	\$	Associate Partners	\$
Bangladesh	22,068	Geon Homes and Korea Christian Gospel Mission	5,202
Fiji	53,029	Reaching Hands	4,882
India	28,388		
Indonesia	34,600		
Philippines	39,884		
Papua New Guinea	54,999		
South Sudan	16,475		
Thailand	-		
Vanuatu	5,309		
Vietnam	45,975		
Zimbabwe	67,468		
People in Mission	74,821		
Emergency	-		
Project Total	443,016	Project Total	10,084

ICP Total 453,100

Funds sent to COCOA Programs

COCOA Program	\$	Associate Partners	\$
Bangladesh ANCP	180,564		
Fiji	14,163		
India	33,149		
India ANCP	168,901		
Papua New Guinea	-		
South Sudan	128,717		
Thailand	19,267		
Vanuatu	23,712		
Zimbabwe	132,488		
Zimbabwe ANCP	586,926		
Emergency	158,959		
Other	119,552		
Project Total	1,566,398	Project Total	-

COCOA Total 1,566,398

Funds sent to IMA Programs

IMA Program	\$	Associate Partners	\$
Projects and Ministries	109,495		
Project Total	109,495	Project Total	-
IMA Total	109,495		

Note: These figures are derived from the Audited Financial Statements available at www.gmp.org.au

Grand Total \$2,128,993

Australian Churches of Christ Global Mission Partners Ltd.

Income Statement – Extract

	2023			2022		
	ICP	COCOA	IMA	ICP	COCOA	IMA
Revenue						
Donations and Gifts						
Monetary	520,972	999,769	197,402	596,525	990,897	164,312
Non-Monetary	-	-	-	-	-	-
Trusts, Legacies and Bequests	643,513	77,469	-	210,539	102,632	33,549
Grants						
Department of Foreign Affairs & Trade	-	959,161	-	-	150,000	-
Investment Income	264,097	20,718	19,195	676,021	(28,212)	(933,149)
Other Income	146,520	-	678,980	20,956	180	21,248
Subtotal International Religious Adherence Promotion Programs Revenue	1,575,102	-	895,577	1,504,041	-	(714,040)
Total Revenue	1,575,102	2,057,117	895,577	1,504,041	1,215,497	(714,040)
Expenditure						
International Programs						
Funds to International Programs	453,101	1,566,398	-	622,814	831,288	-
Program Support Costs	54,305	198,234	-	64,680	150,507	-
Community Education	74,953	160,884	-	85,848	137,711	-
Fundraising Costs - Public	91,981	191,456	-	110,491	151,610	-
Accountability and Administration	191,439	321,677	-	88,333	154,493	-
Subtotal International Aid and Development Programs Expenditure	-	2,438,649	-	-	1,425,609	-
Subtotal International Religious Adherence Promotion Programs Expenditure	865,779	-	-	972,166	-	-
Domestic Programs						
Funds to Domestic Indigenous Programs	-	-	109,495	-	-	167,696
Program Support Costs	-	-	135,004	-	-	245,719
Community Education	-	-	30,755	-	-	49,363
Fundraising Costs - Public	-	-	34,123	-	-	52,448
Accountability and Administration	-	-	759,555	-	-	2,588,980
Subtotal Domestic Programs Expenditure	-	-	1,068,932	-	-	3,104,206
Total Expenditure	865,779	2,438,649	1,068,932	972,166	1,425,609	3,104,206
Surplus / (Deficit) for the Year	709,323	(381,532)	(173,355)	531,875	(210,112)	(3,818,246)

Notes to the Income Statement:

- COCOA funds are used exclusively for International Aid and Development activity.
- ICP Funds are used in International Religious Adherence Promotion and Welfare Programs.
- IMA Funds are used in Domestic Indigenous Programs.
- No funds are used for International or Domestic Political Programs.
- There were no grants received from other Australian or Overseas agencies.
- There was no expenditure under the headings 'Fundraising Costs: Government, multilateral and private' or 'non-monetary' expenditure.

Notes to the Statement of Financial Position:

- GMP has a nil inventory, holds no assets for sale, has no non-current trade receivables, and no investment property.

Australian Churches of Christ Global Mission Partners Ltd.

Statement of Financial Position

	2023			2022		
	ICP	COCOA	IMA	ICP	COCOA	IMA
Assets						
Cash and Cash Equivalents	1,275,680	303,390	(978,319)	661,766	565,111	(617,588)
Trade and Other Receivables	42,241	6,936	35,265	64,692	31,203	7,951
Financial Assets	3,109,317	688,370	360,306	3,376,145	729,217	401,604
Property, Plant & Equipment	7,659	9,722	1,014,500	8,674	10,768	1,016,621
Intangible Assets	-	-	517	1,743	4,165	517
Total Assets	4,434,897	1,008,418	432,269	4,113,020	1,340,464	809,105
Liabilities						
Trade and Other Payables	102,924	47,316	3,286,995	132,035	173,590	3,380,024
Employee Benefits	42,654	119,165	61,760	58,129	110,826	89,283
Contract Liabilities	-	-	-	176,400	-	-
Total Liabilities	145,576	166,481	3,348,755	366,564	284,416	3,469,307
NET ASSETS	4,289,321	841,937	(2,916,486)	3,746,456	1,056,048	(2,660,202)
Equity						
Restricted Funds	4,104,217	1,351,045	1,920,353	3,733,790	1,268,103	1,443,329
Accumulated Funds	(849,357)	(509,108)	(4,836,840)	(1,021,795)	(212,055)	(4,103,531)
Asset Revaluation Reserve	1,034,461	-	-	1,034,461	-	-
TOTAL EQUITY	4,289,321	841,937	(2,916,486)	3,746,456	1,056,048	(2,660,202)

Statement of Changes in Equity

	Accumulated Funds	Restricted Funds	Asset Revaluation Reserve	Total
Balance at 1 July 2021	(2,524,809)	7,454,748	1,034,461	5,964,400
Deficit for the year	(3,164,307)	-	-	(3,164,307)
Transfers to / (from) reserves	1,009,485	(1,009,485)	-	-
Balance at 30 June 2022	(4,679,631)	6,445,263	1,034,461	2,800,093
Deficit for the year	(169,728)	-	-	(169,728)
Transfers to / (from) reserves	(822,340)	822,340	-	-
Balance at 30 June 2023	(5,671,701)	7,267,603	1,034,461	2,630,363

Statement by the Board

The Board declares that the financial extracts of Australian Churches of Christ Global Mission Partners Ltd. for the year ended 30 June 2023, as set out on the previous pages, has been derived from, and are consistent with, the full audited financial report of Australian Churches of Christ Global Mission Partners Ltd. The full financial report is available on request and is in accordance with relevant legislation, accounting standards, provides a true and fair view of our financial position and performance, and indicates that GMP can pay its debts as and when they become due. This Declaration is made in accordance with a resolution of the Board and is signed for, and on behalf of the Board by:

Barrie Yesberg
Board Chair

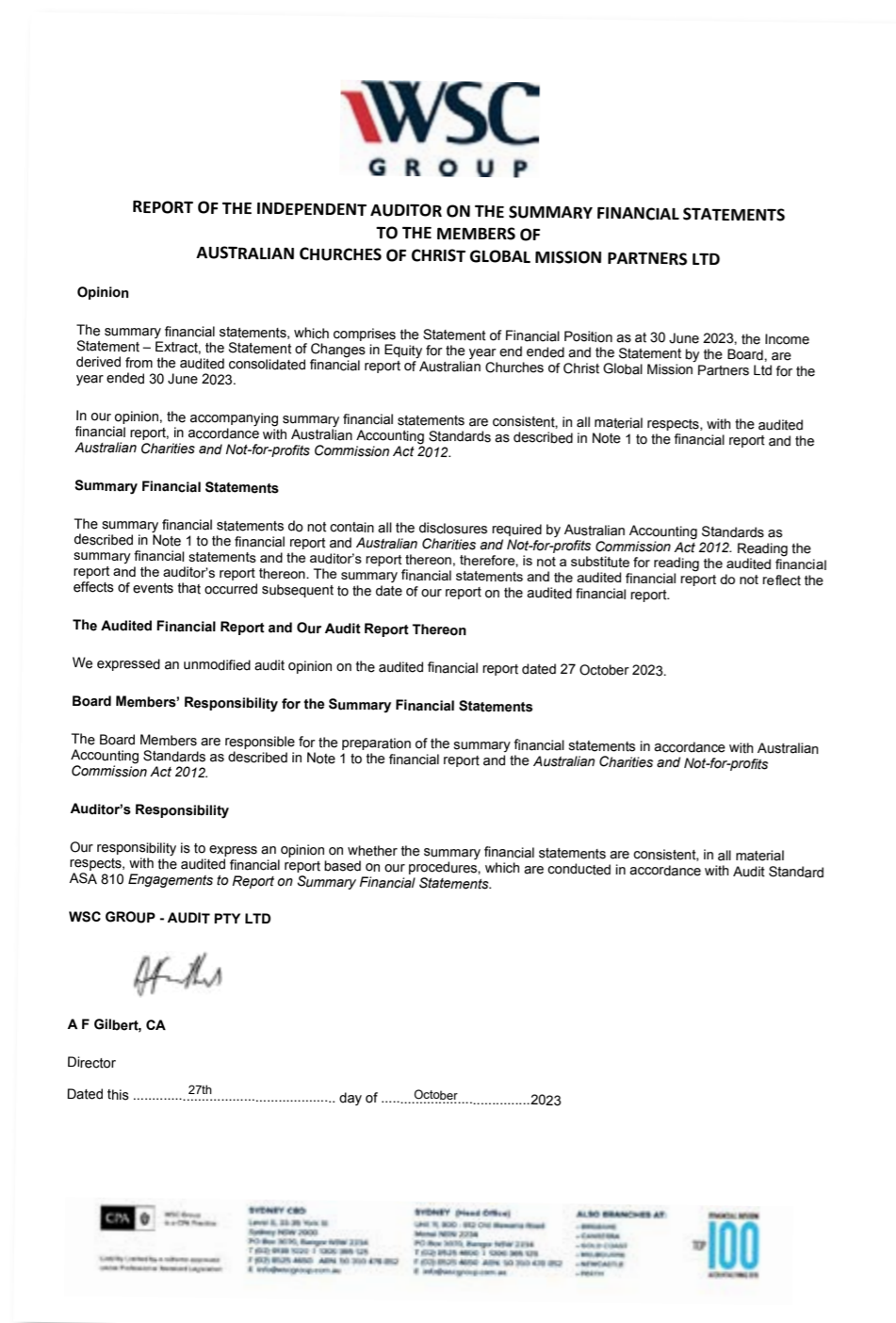


John Lamerton,
Executive Officer



27 October 2023

Independent Audit Report



Australian Churches of Christ Global Mission Partners Ltd.

Churches of Christ established the Australian Churches of Christ Global Mission Partners (GMP) in 1891. Our strong history is evident in the quality and values of our partnerships, both internationally and in Australia.

Our Vision:

Every Church Partnering in Global Mission

Our Mission:

Linking People, Churches and Resources across Nations

Our Expectation:

Life-Changing Partnerships

GMP Values

- Gospel Centred
- Committed to Sharing
- Respecting People
- Meeting Human Need
- Working for Lasting Change
- In Partnership
- Seeking Independence and Maturity
- Demonstrating High Standards of Practice

Registered Office:

2 Danby Street
Torrensville SA 5031

Postal Address:

PO Box 341
Torrensville Plaza SA 5031

Freecall: 1800 467 222

Phone: 08 8352 3466

Website: www.gmp.org.au

Email: info@gmp.org.au

Australian Business Number:

30 455 408 814

GMP is a company limited by guarantee. The company members are the State Churches of Christ bodies and the Council of Churches of Christ in Australia, and each appoints up to two voting representatives. The members elect the directors. GMP is registered in each State according to local requirements for fundraising.

GMP fulfills its mission through three distinct programs:



International Church Partnerships (ICP) prioritises church planting and development, evangelism and outreach, and the training and development of leaders.



Churches of Christ Overseas Aid (COCOA) is an approved aid and development program with a focus on empowering communities in poverty.



Indigenous Ministries Australia (IMA) focuses on Indigenous ministry and development.

All photos (unless otherwise credited) are taken by GMP staff, represent actual GMP projects or partnerships and are taken with permission.

Based on communications with our partners, all statistics presented were accurate at the time of printing.

The stories in the Annual Report have been shared with permission and some names may have been changed to protect their identity.



GMP is fully accredited by the Australian Department of Foreign Affairs and Trade (DFAT), responsible for managing the Australian Government's development program. GMP receives support through the Australian NGO Cooperation Program (ANCP).



GMP is a member of the Australian Council for International Development (ACFID) and is committed to full adherence to the ACFID Code of Conduct, which is a voluntary, self-regulatory code of practice (www.acfid.asn.au).

The ACFID Code of Conduct describes standards of practice for its members, including a complaints procedure. Please direct any complaints regarding GMP to the Executive Officer on +61 8 8352 3466. Complaints regarding breaches of the Code can also be directed to ACFID (www.acfid.asn.au).

GMP is also a member of the Church Agencies Network, Micah Australia, and the ACT Alliance.





**THANK YOU FOR
YOUR SUPPORT!**

*We couldn't do it
without you.*

Above: Children from Emmanuel Childcare Centre who benefitted from food packets distributed by Hosanna Ministries, Mumbai, India
Back Cover: Garden, Zimbabwe.



Australian Churches of Christ
Global Mission Partners Ltd.

www.gmp.org.au



ACFID
MEMBER